



## Porcelain coffee service for 4 persons, by Poltava Porcelain Factory, Ukraine, maker marked, 1964-2000s.

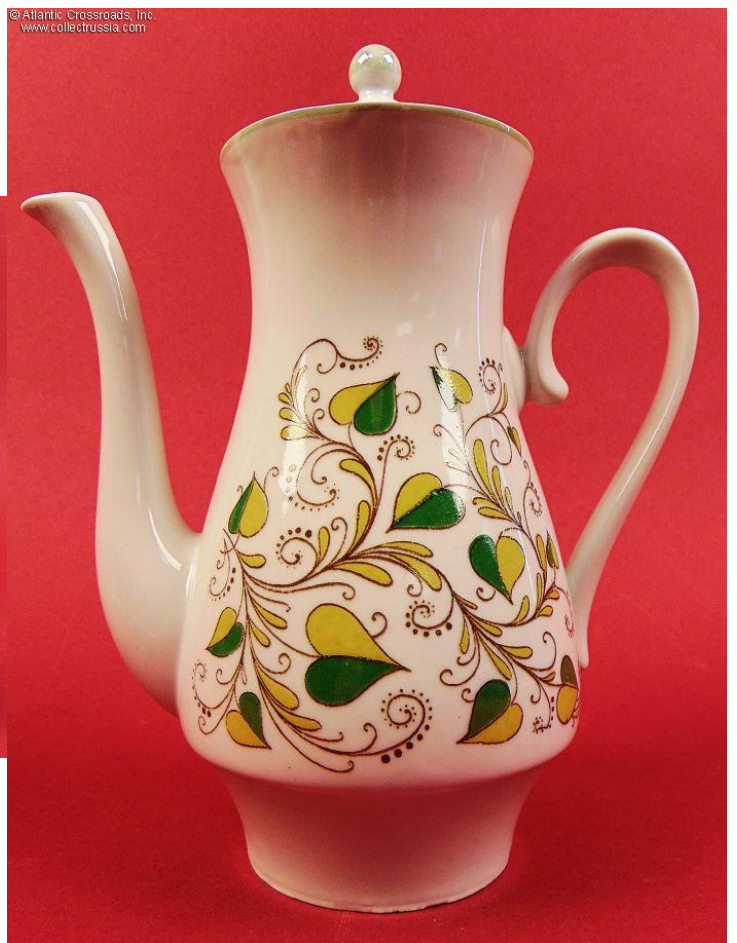
The set includes 1 coffee pot with lid, and 4 cup-and-saucer pairs. Each item is maker marked on the bottom (fig. # 582 in Volume One of Marks on Soviet Porcelain, Faience, and Majolica, 1917-1991 by Nasonova et al). The coffee pot stands almost 8" tall to the tip of the lid. The cups are 2 ¼" tall, 2 ½" across at the lip, 1 ½" across at the foot. The saucers are ¾" tall, 4 ¼" across at the lip. The coffee pot and cups are decorated with a delightful, airy, summery plant-themed artwork.

In excellent condition. The red color of the maker's mark signifies top quality rating by Quality Control. One of the saucers has a green mark, signifying 2nd quality rating due to a production accident which resulted in a curvy line of the lip and a small scuff to the edge of it. Not too obvious or detractive.

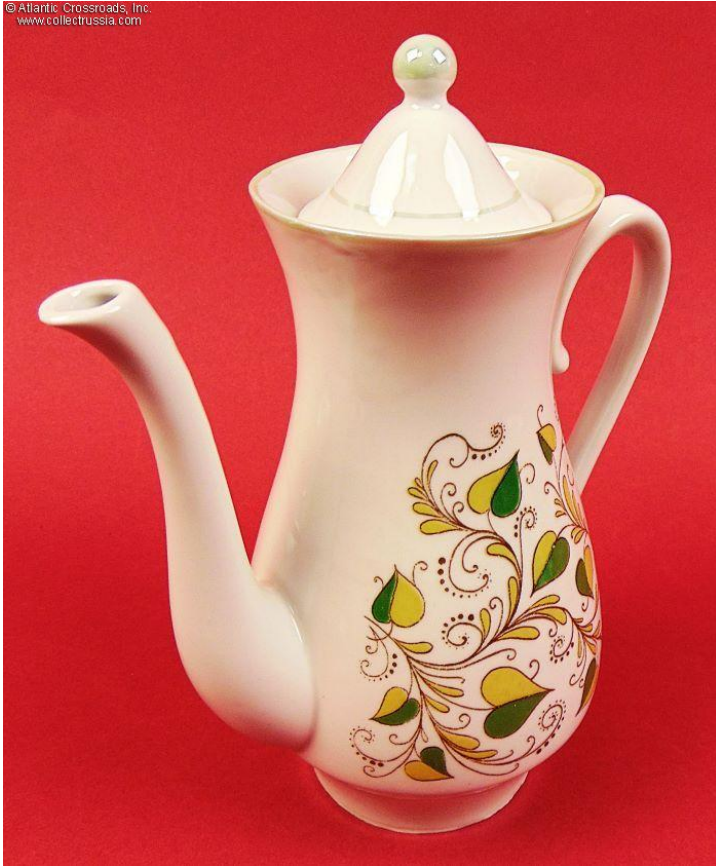
Please note that the teaspoon in our photo is for size reference

Item# 45048

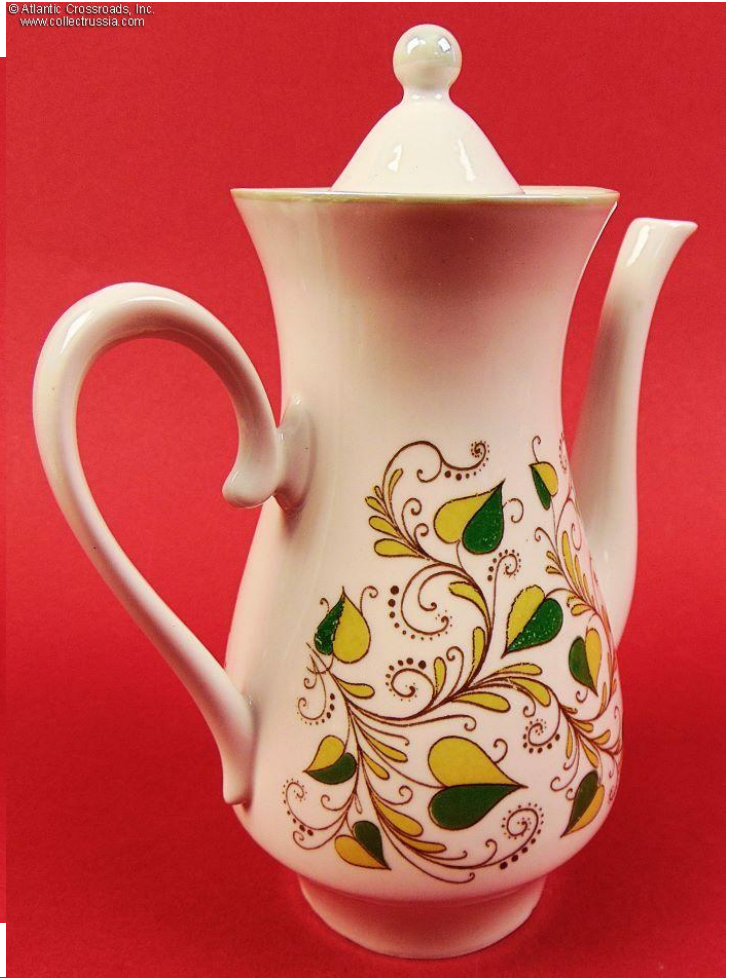
**\$90.00**



© Atlantic Crossroads, Inc.  
www.collectrussia.com



© Atlantic Crossroads, Inc.  
www.collectrussia.com



© Atlantic Crossroads, Inc.  
www.collectrussia.com



© Atlantic Crossroads, Inc.  
www.collectrussia.com



© Atlantic Crossroads, Inc.  
www.collectrusia.com



© Atlantic Crossroads, Inc.  
www.collectrusia.com



© Atlantic Crossroads, Inc.  
www.collectrusia.com



© Atlantic Crossroads, Inc.  
www.collectrusia.com



© Atlantic Crossroads, Inc.  
www.collectrussia.com



© Atlantic Crossroads, Inc.  
www.collectrussia.com



© Atlantic Crossroads, Inc.  
www.collectrussia.com



© Atlantic Crossroads, Inc.  
www.collectrussia.com

