

Portrait of Stalin, Embroidery in Wool on Canvas, with the Marshal's Star Accented with Pearls, circa late 1940s.

Rather large size, the image measuring 15"x18". Stalin is depicted in his Marshal of the Soviet Union tunic wearing the Marshal's star and the Gold Star of Hero of Socialist Labor. Both decorations are done in meticulous detail, with the hammer and sickle clearly visible on the Gold Star, whereas the diamonds on the real Marshal's star are expressed in pearls, accented by small black river pearls. There is enough canvas margin to re-mount the artwork on a backing if desired. Looking at the margins, it appears that the portrait used to be mounted on a thin hard backing - a piece of plywood or particle board, not the usual wooden stretcher frame used in framing paintings. We will leave the choice to the next owner of this piece.

In excellent condition, showing no wear or damage of any kind.

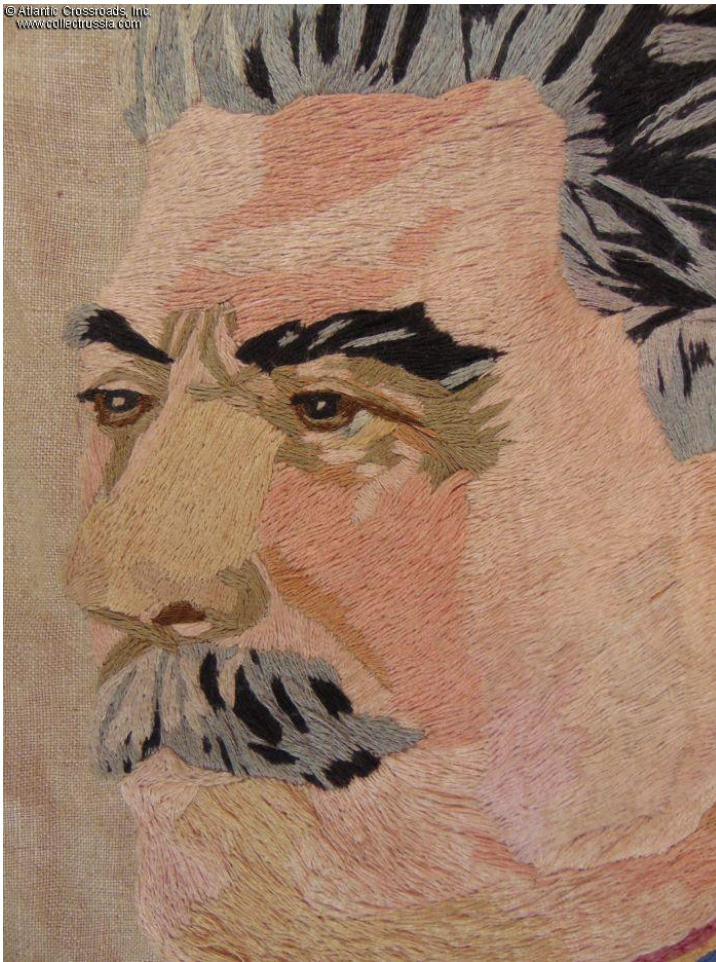
Please note that the 1-ft. ruler in our photo is for size reference.

Item# 43524

\$450.00



© Atlantic Crossroads, Inc.
www.collectrusia.com



© Atlantic Crossroads, Inc.
www.collectrusia.com



© Atlantic Crossroads, Inc.
www.collectrusia.com



© Atlantic Crossroads, Inc.
www.collectrusia.com

