

Stalin, a bronze bust signed by Bogolyubov and Ingal and dated 1951.

Very heavy, standing 9" tall and weighing 11 lbs. 8 oz. The plinth's size is 2 ¼" x 3 ½". Excellent likeness and attention to detail are conveyed in the facial features and shoulder boards. Rather uncommonly, the top of the plinth is not smooth but features a wrap-around wreath.

The bust is signed on the back by Bogolyubov and Ingal, renowned Soviet sculptors famous for their portraits of Stalin and Lenin, although perhaps their main contribution to art was their work at the Lomonosov Porcelain Factory where they modeled dozens of items of amazing beauty and realism in detail.

In outstanding, superb condition. The coating is completely intact, and there is nothing visible to the naked eye that could be considered as wear or damage.

Veniamin Bogolyubov (Вениамин Яковлевич Боголюбов, 1895 - 1954), son of a major general in the Russian Imperial Army and graduate of the last class of the Imperial Naval Cadet Corps, took up sculpture in 1923 and received proper formal education in this art. From 1929, he began working in tandem with Vladimir Ingal. Their first major work was a larger-than-life statue of Sergo Ordzhonikidze, which earned them the Stalin Prize, 2nd class, in 1941. Their talent, success of their creations and the politically correct choice of subjects quickly led to the great privilege of authorization to create images of Lenin and Stalin.

Bogolyubov worked with other sculptors as well, sometimes together with Ingal, and sometimes without him, but most of their works were created together.

Please note that the medal in our photo is for size reference.

Item# 42231

**\$850.00**

© Atlantic Crossroads, Inc.  
www.collectrussia.com



© Atlantic Crossroads, Inc.  
www.collectrussia.com



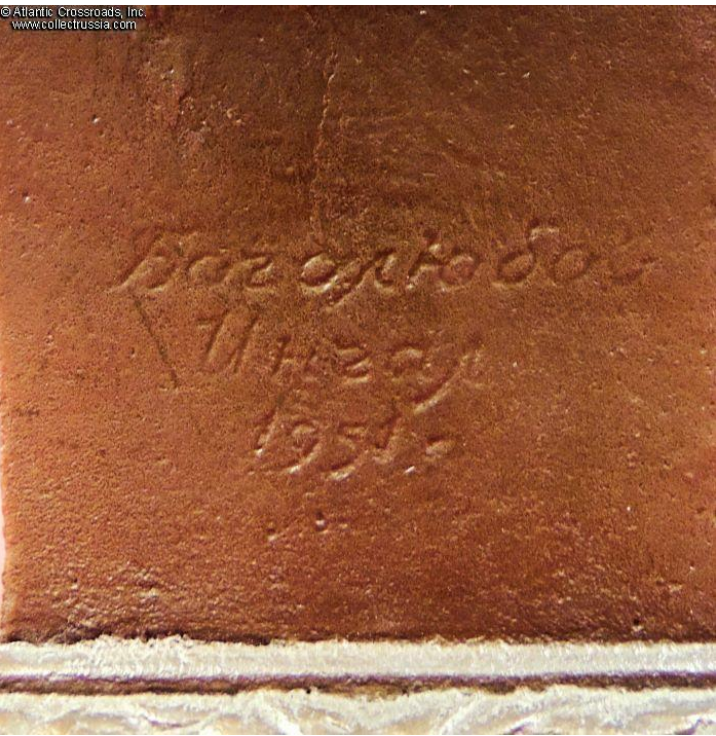




© Atlantic Crossroads, Inc.  
www.collectrussia.com



© Atlantic Crossroads, Inc.  
www.collectrussia.com



© Atlantic Crossroads, Inc.  
www.collectrussia.com



© Atlantic Crossroads, Inc.  
www.collectrussia.com

