



Cobalt Blue Porcelain Flower Vase with 22-carat gold floral artwork, by LFZ (Lomonosov Porcelain Factory), 1960s.

Stands approx. 6" tall, lip - shoulder - foot measurements are 3" - 4 1/2" - 3", respectively. Manufactured by the Lomonosov Porcelain Factory (LFZ), maker marked on the bottom. This version of the LFZ logo was in use in the 1960s (fig. # 489 in Volume One of Marks on Soviet Porcelain, Faience, and Majolica, 1917-1991 by Nasonova et al). The original model for this vase was created in the 1940s (fig. 15, p. 95 of Soviet Porcelain 1930 - 1980, Collector's Guide by S. Beloglazov).

The vase is in excellent condition. There is just a couple of tiny scuffs and hairlines on the body which are completely lost in its rich cobalt color and can be seen only at close distance at a certain angle against bright light. The gold artwork on the body is completely intact and has retained its full original luster. The ornament running around the neck is partially worn-off but still quite visible.

Please note that the teaspoon in our photo is for size reference.

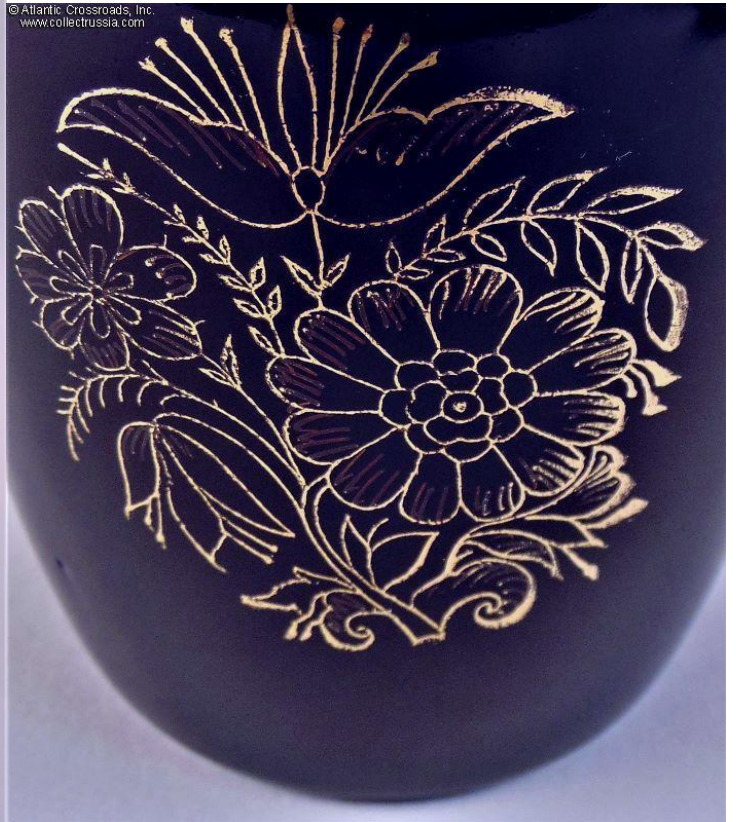
Item# 40626

\$110.00

© Atlantic Crossroads, Inc.
www.collectrussia.com



© Atlantic Crossroads, Inc.
www.collectrussia.com



© Atlantic Crossroads, Inc.
www.collectrusia.com



© Atlantic Crossroads, Inc.
www.collectrusia.com



© Atlantic Crossroads, Inc.
www.collectrusia.com

