



### Badge for Mine Clearing, circa late 1960s - early 70s issue.

Aluminum, paint, lacquer; the pendant measures 43.8 x 34.4 mm. This is a very early version of the badge featuring the early style logo of the Pobeda Factory on the reverse of the suspension, a Cyrillic "P" in a hexagon. The reverse of the pendant is concaved, without a counter-relief, and shows characteristic "wrinkles".

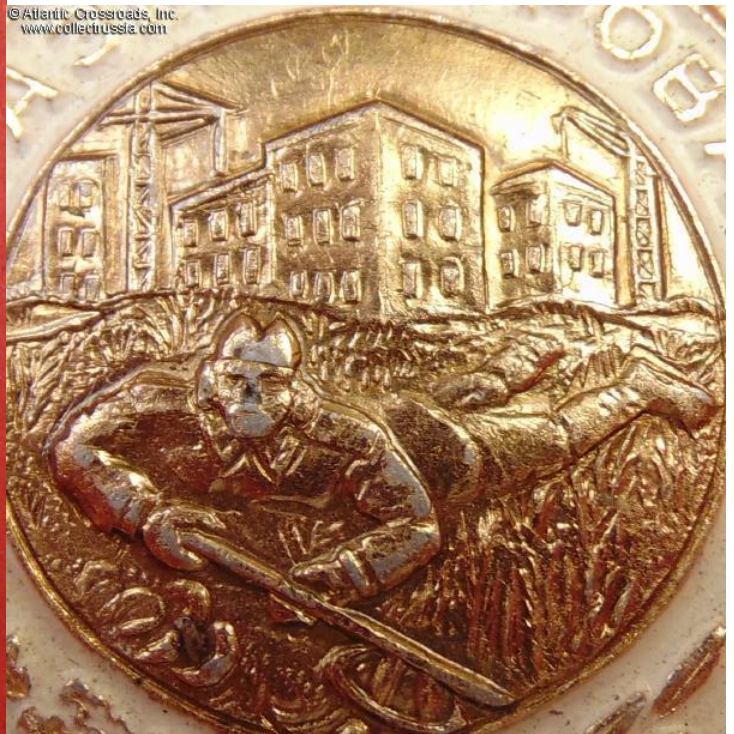
In excellent condition. The paint and lacquer finish are perfect. On the reverse, there is a bit of oxidation on the base of the pin and attachment of the plaque that holds the ribbon in place, but all the parts are completely sound.

/Borisov, Badges of the Soviet Armed Forces, fig. 124/.

Item# 37108

**\$40.00**

© Atlantic Crossroads, Inc.  
[www.collectrussia.com](http://www.collectrussia.com)

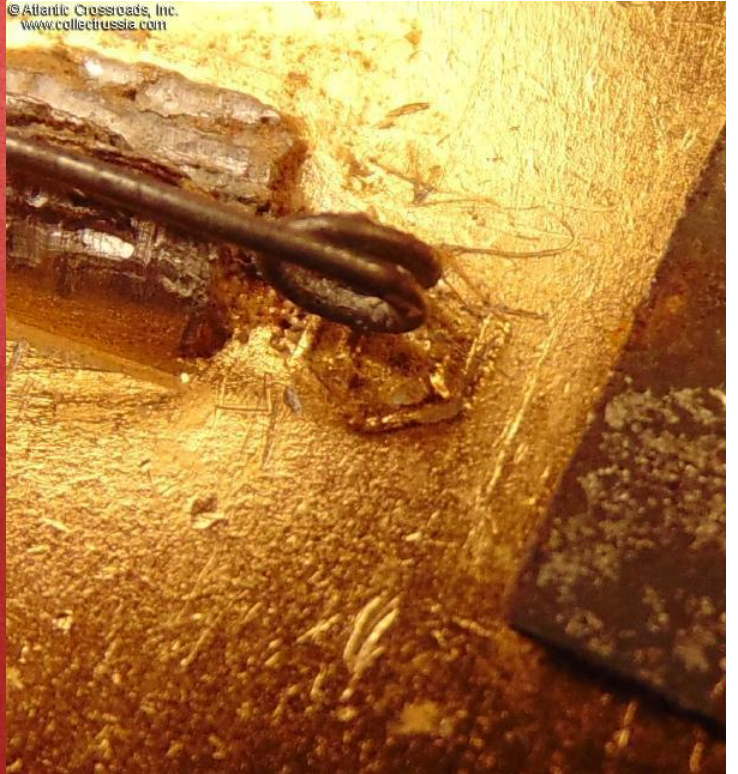


© Atlantic Crossroads, Inc.  
[www.collectrussia.com](http://www.collectrussia.com)

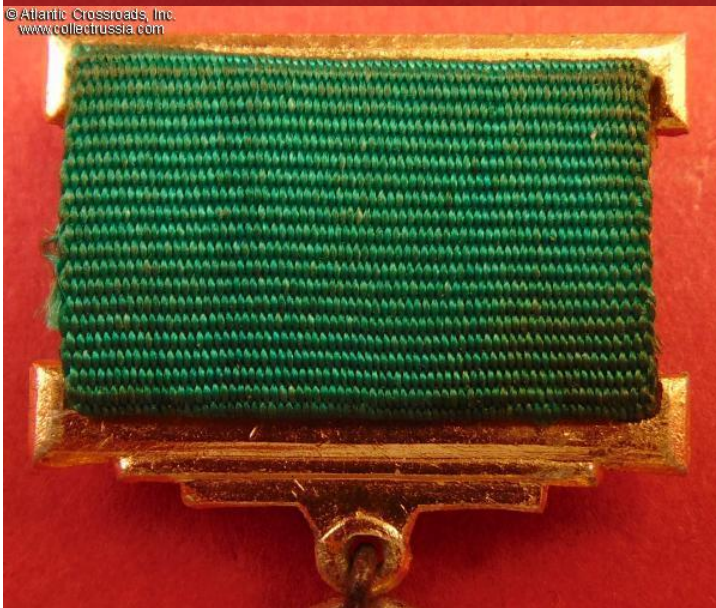
© Atlantic Crossroads, Inc.  
www.collectrussia.com



© Atlantic Crossroads, Inc.  
www.collectrussia.com



© Atlantic Crossroads, Inc.  
www.collectrussia.com



© Atlantic Crossroads, Inc.  
www.collectrussia.com

