

Moscow Kremlin silver gilt woman's compact, by the Leningrad Jewelry and Watch Factory, hallmark dates to either 1957 or 1967.

Enameled plaque on the obverse shows a view of the Kremlin as seen from the Moskva River.

Silver gilt, enamel, 2 3/4" diameter, approximately 3/8" wide, no mirror. "ЛЮ7" and an "875" Leningrad hallmark (with worker's head) at center of the reverse lid; extra "875" hallmark on the obverse lid near the hinge.

Very good condition. The gilding has worn thin, particularly on the reverse of the case. A few very light scratches on the enamel surface from having been carried in a purse.

Probably produced during the 40th or 50th anniversary celebrations of the October Revolution. We once saw an almost identical case included in a collection of Soviet table medals and it did not look at all out of place. It would probably display well on a desk top if placed on a small brass "pocket watch" easel.

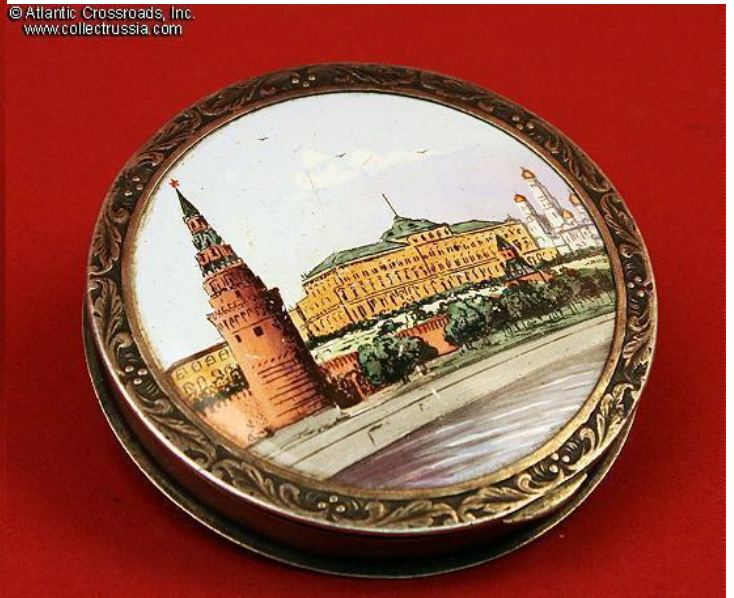
Item# 24591

\$225.00

© Atlantic Crossroads, Inc.
www.collectrussia.com



© Atlantic Crossroads, Inc.
www.collectrussia.com



© Atlantic Crossroads, Inc.
www.collectrussia.com



© Atlantic Crossroads, Inc.
www.collectrussia.com



© Atlantic Crossroads, Inc.
www.collectrussia.com



© Atlantic Crossroads, Inc.
www.collectrussia.com



© Atlantic Crossroads, Inc.
www.collectrussia.com



© Atlantic Crossroads, Inc.
www.collectrussia.com



© Atlantic Crossroads, Inc.
www.collectrussia.com

