



Boy with Sled, Polonnoe Artistic Ceramics Factory, 1956-1973.

6 3/8" x 2 5/8" x 3 7/8". (16 x 7 x 9.7cm), pearlescent finish on snow and the boy's coat. Excellent condition with the exception of tiny area of dirt at the front bottom edge (see photos) which is not detractive.

//Fig 27 in "Soviet Porcelain [Volume 2]"//

/ /trademark #567 in Volume One of "Marks on Soviet Porcelain, Faience, and Majolica, 1917-1991" /

Item# 23020

\$90.00

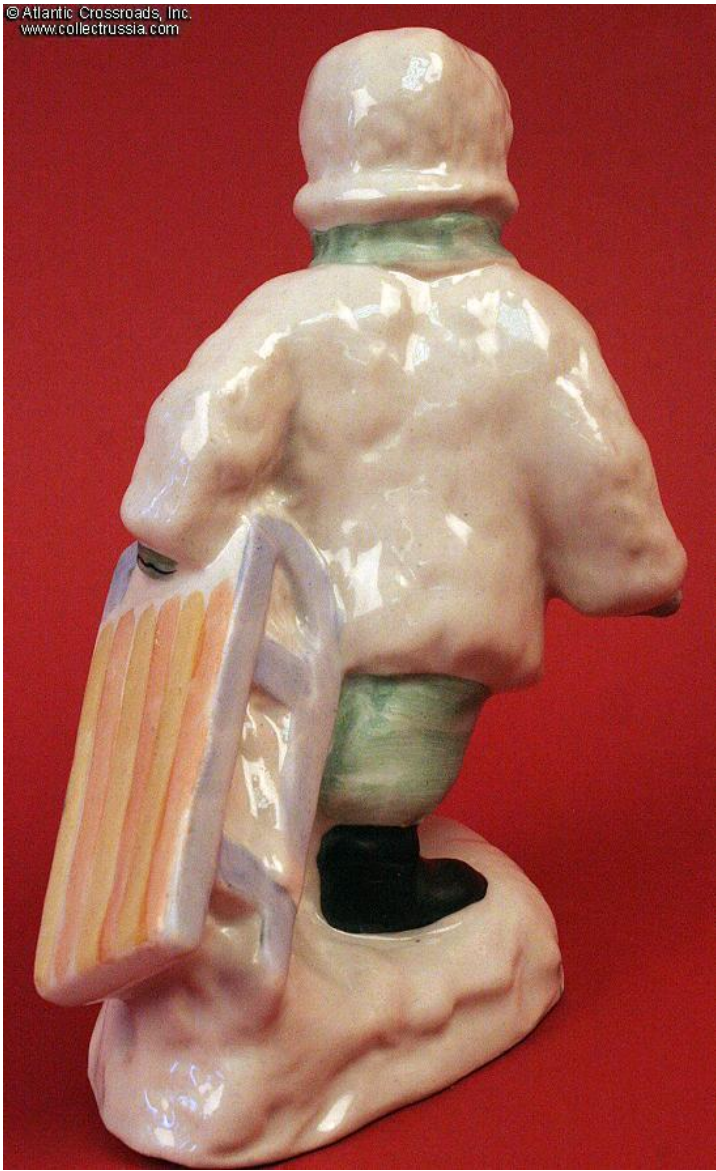
© Atlantic Crossroads, Inc.
www.collectrussia.com



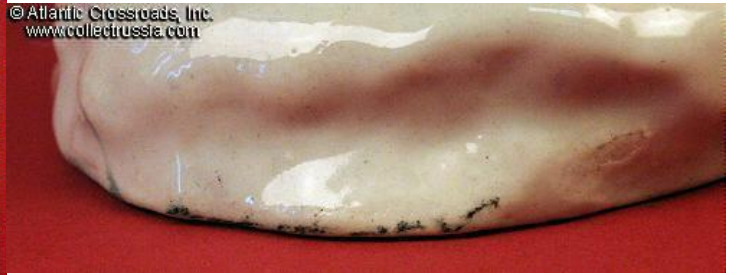
© Atlantic Crossroads, Inc.
www.collectrussia.com



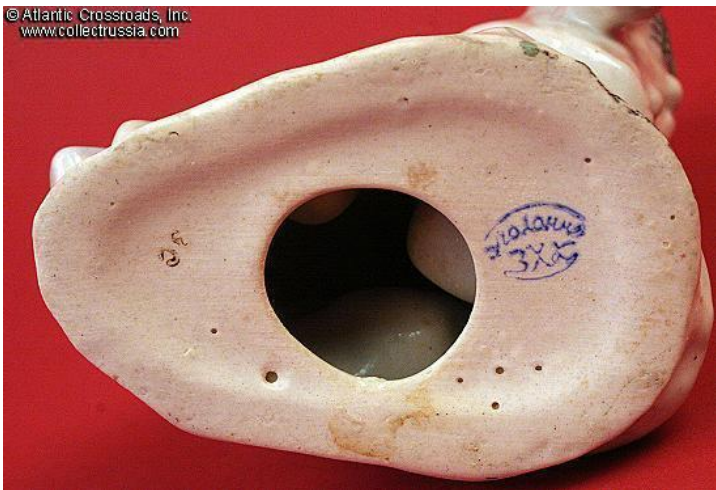
© Atlantic Crossroads, Inc.
www.collectrussia.com



© Atlantic Crossroads, Inc.
www.collectrussia.com



© Atlantic Crossroads, Inc.
www.collectrussia.com



© Atlantic Crossroads, Inc.
www.collectrussia.com

