

Lenin in Grade School, Leningrad Porcelain Factory (LFZ or Lomonosov), 1950s-1960s, Porcelain figurine shows excellent execution and is a very good likeness.

5 1/2" x 3 1/2" x 3" (140 x 90 x 77mm). Small boy diligently does his reading lesson - the image is an excellent match for the famous childhood likenesses of Lenin. The Lomonosov trade mark is one used by the Leningrad factory both in the 1950s and the 1960s. Excellent condition.

Perfect image of a young school boy in the 1870s - even to the button shoes he wears. Very well done.

/trademark is either # 486 or #489 in Volume One of "Marks on Soviet Porcelain, Faience, and Majolica, 1917-1991" /

Item# 22432

**\$95.00**



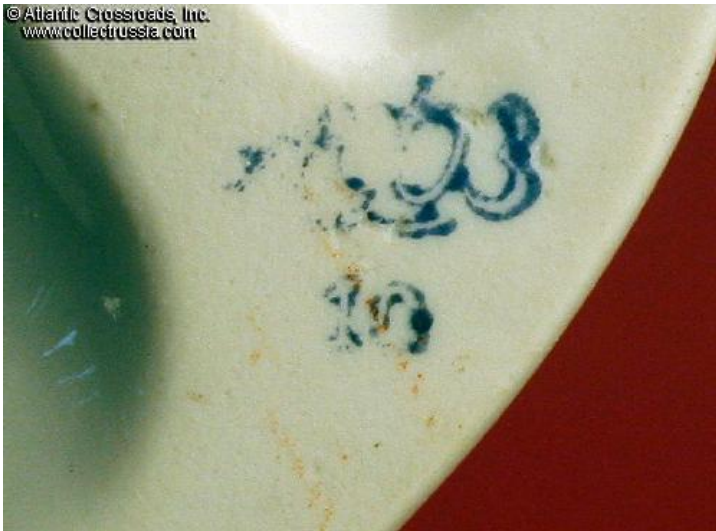
© Atlantic Crossroads, Inc.  
www.collectrussia.com



© Atlantic Crossroads, Inc.  
www.collectrussia.com



© Atlantic Crossroads, Inc.  
www.collectrussia.com



© Atlantic Crossroads, Inc.  
www.collectrussia.com



