

Elegant Kasli cast iron statuette "Odetta", circa 1970s-80s.

Stands approx. 6" tall, the plinth is 1 3/4" wide, weighs a little over 12 oz. The statuette depicts Odetta, the main character of "The Swan Lake" ballet by P. Tchaikovsky. The figurine amazes by the intricacy of minute details, so characteristic of the artwork by Kasli masters. This particular statuette is the work of sculptor O. Tazhnaya-Cheshuina and is one in the series of three statuettes of ballerinas in three different ballets. The original cast is listed on p.207 of Cast Iron Casting (1920 - 2009) by A. Zak, with the rarity rating of 3 (out of 3, 1 being the most rare). Raised maker's mark is on the bottom.

In excellent outstanding condition. The black coating ("Dutch soot" as the master casters call it) is intact on the figurine itself and just slightly deteriorated on the top surface of the plinth. The screw fastening the figurine to the plinth is perfectly tight.

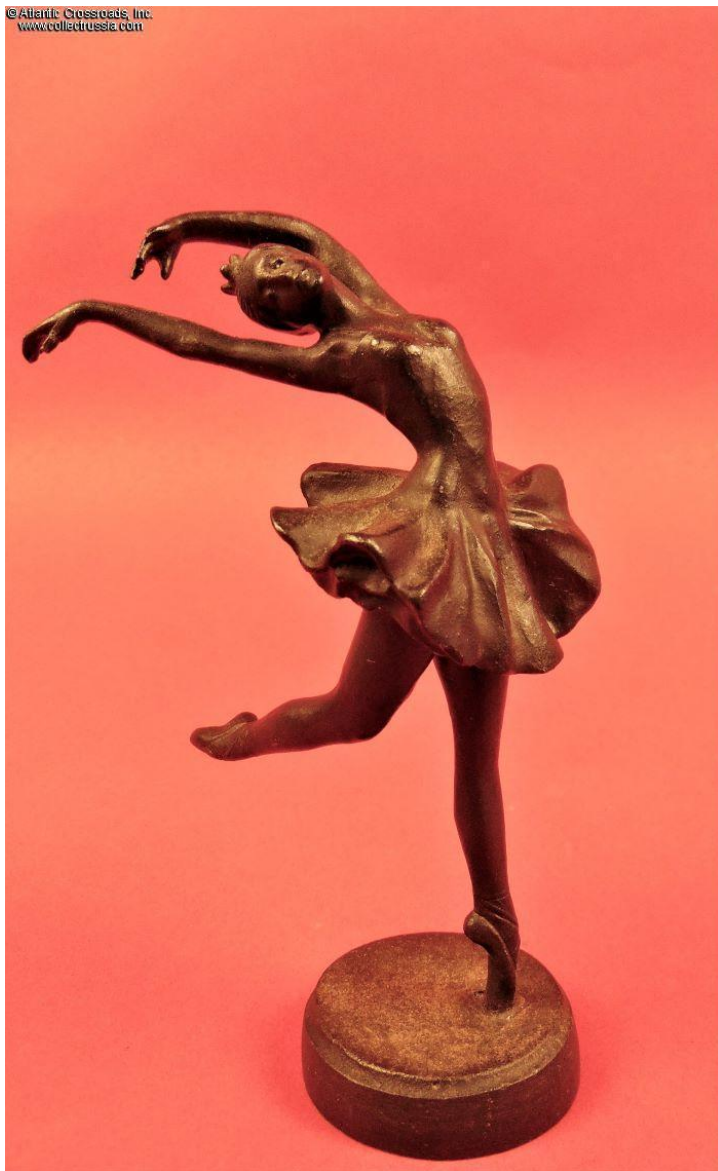
Kasli was, and remains, one of the finest manufacturers of cast decorative works in Russia and survived from Imperial times through the Soviet Era to today. The Kasli Factory of Architectural and Artistic Casting, as it is now called, is located in the city of Chelyabinsk in the Urals Region of Russian Federation.

Please note that the penny in our photo is for size reference.

Item# 39620

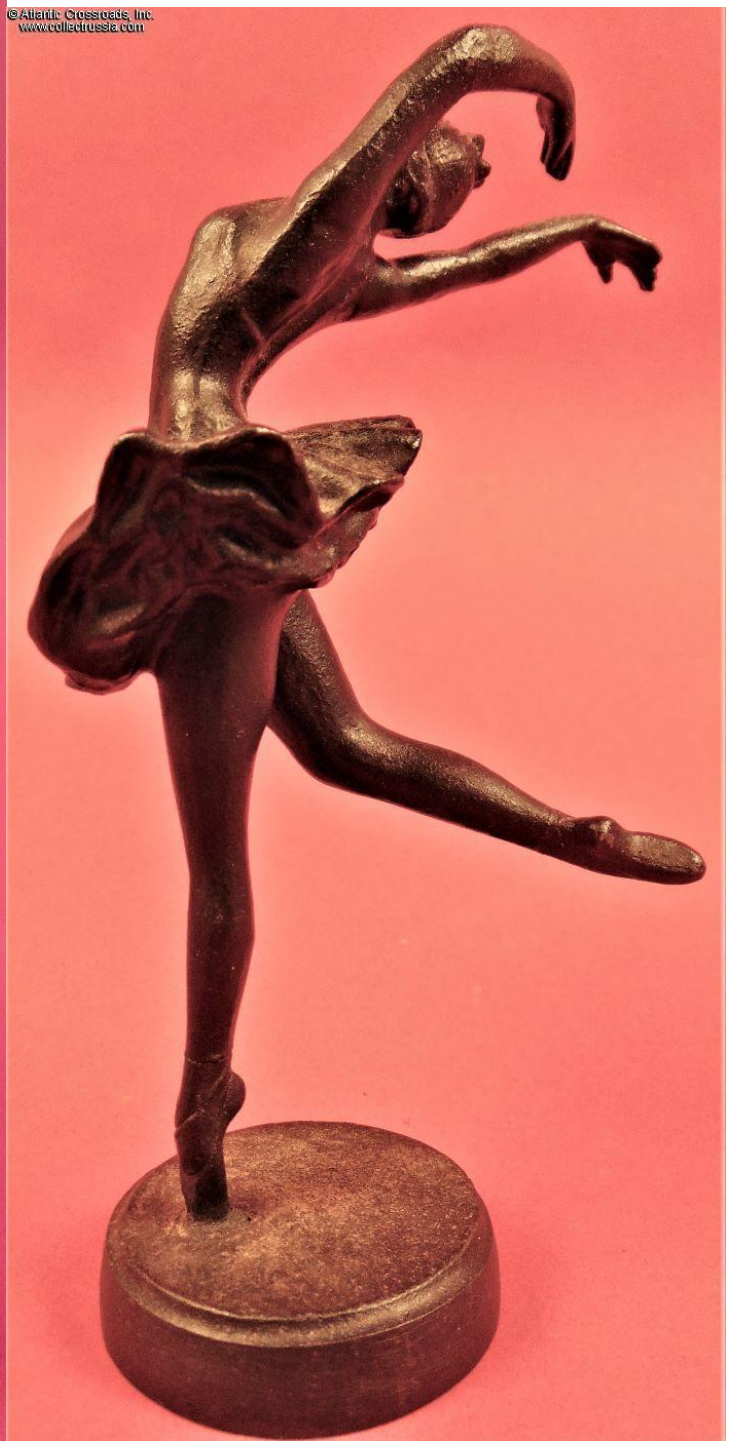
\$150.00

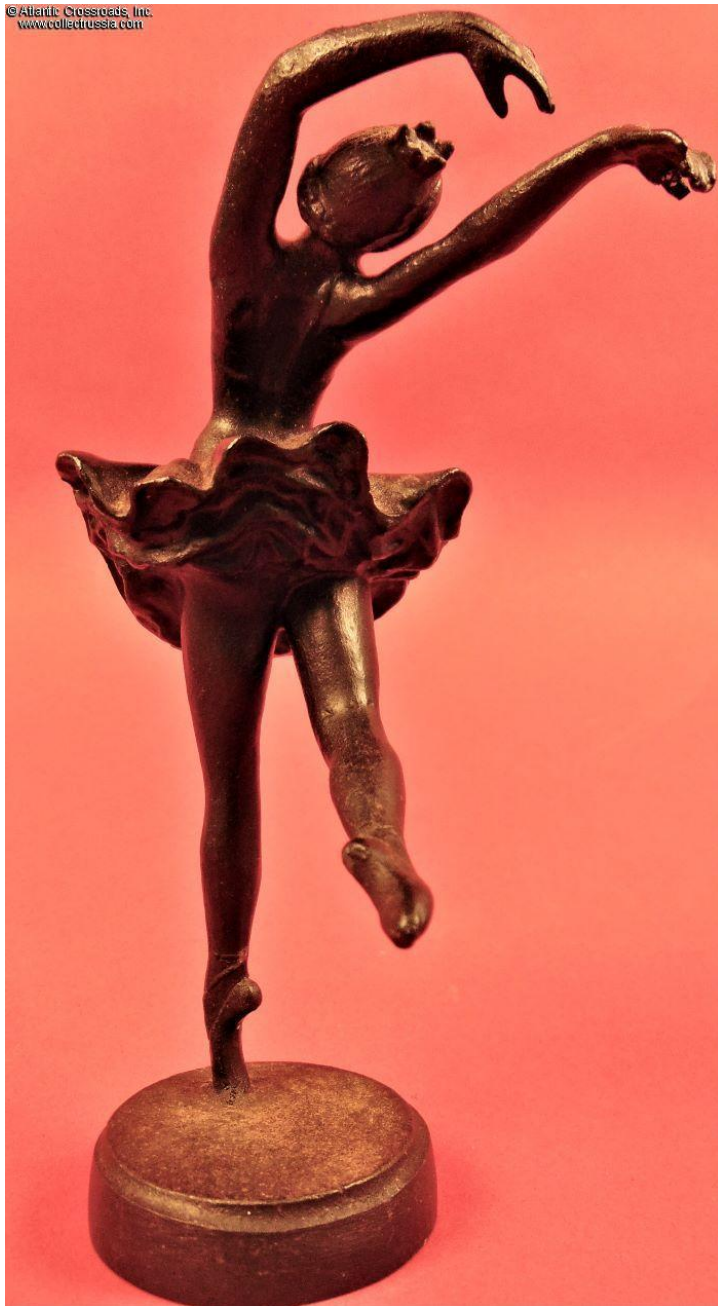
©Atlantic Crossroads, Inc.
www.collectrussia.com



©Atlantic Crossroads, Inc.
www.collectrussia.com









Балерины: Мария, Зарема, Одетта
Касли. 1970–1980-е гг. 15 см. R3
Скульптор Таежная-Чешуина
Ольга Петровна, р. 1911