

Tin from the famous Red October confectionery factory in Moscow, pre-1946.

Located just across the Moskva River from the Kremlin, the factory frequently filled the entire area around Red Square with the aroma of chocolate!

Tin and paint, 4 1/2" x 3 1/2" by 3/4" wide. Art Nouveau image of flowers on the lid, Narkomat and factory identifications on the reverse.

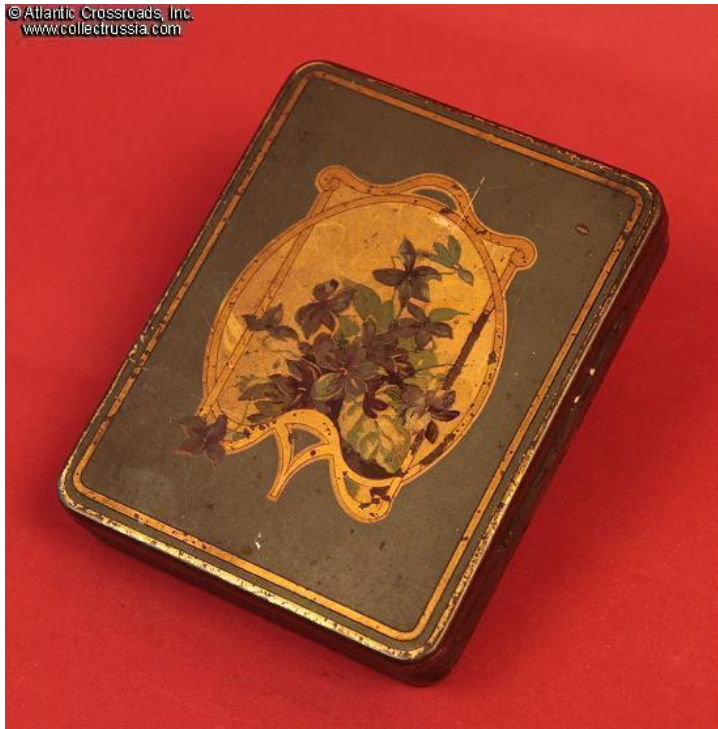
Very good to excellent condition. Slight nicotine patina does not detract.

Its combination of refined artwork and almost pre-1900 lettering gives the initial impression that it might date to before the Revolution rather than to only the 1930s or 1940s!

Item# 24732

**\$120.00**

© Atlantic Crossroads, Inc.  
www.collectrussia.com



© Atlantic Crossroads, Inc.  
www.collectrussia.com



© Atlantic Crossroads, Inc.  
www.collectrussia.com



© Atlantic Crossroads, Inc.  
www.collectrussia.com

